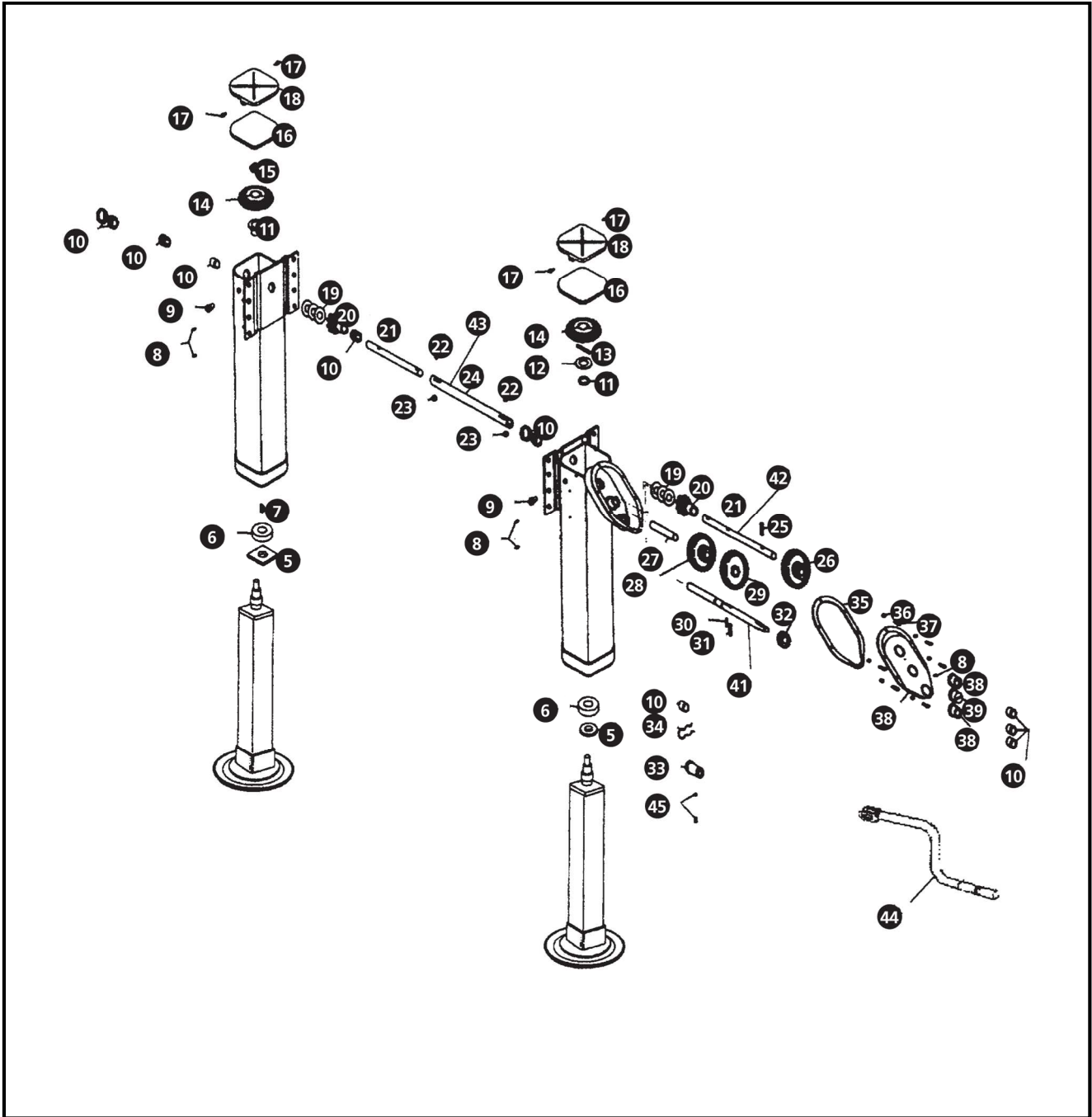




SAF-HOLLAND Group

LANDING LEGS

LG75 EX75/4 LGS4A/1A



LANDING LEGS

LG75 EX75/4 LGS4A/1A

Item	Description	Prior to February 1990 Model LG75	Between 02/090 to 05/94 Model EX75/4	After May 1994 Model
1	Stud Foot Standard	XAV796B1	XAV796B1	XAV796B1
2	Skid Foot - Weight Saver	-	-	XAV796WS
3	Axle - Hollow	XAV19011	XAV19011	XAV19011
	Axle - Solid	XAV19031	XAV19031	XAV19031
4	Roll Pin - 0.36" x 3.0" Long	XB21S3753000	XB21S3753000	XB21S3753000
5	Thrust Washer	XAV1913	XAV1913	XAV06629
6	Ball Bearing - Standard Duty	XBV647	XBV647	XBV647
	Ball Bearing - Heavy Duty	XBV6471	XBV6471	XBV6471
7	Woodruff Key	XBH322	XBH322	-
8	Fitting - Lubrication	XB767	XB767	XB767
9	Plug - Lubrication	XB01789	XB01789	XB01789
10	Bush	XBV851	XB0307	XBLG0559
	Retainer - Bush	-	-	XALG1570
11	Bush - Plastic	XBV643A2	XBV643A2	XBV643A2
12	Washer - Hardened Steel	-	-	XBV06632
13	Pin - Hardened Steel	-	-	XACRPV06635
14	Bevel Gear	XAV1962	XAV042051	XAV06601
		22 Teeth	20 Teeth	24 Teeth
15	Jam Nut 1" 14	XBFW25	XBFW25	-
16	Gasket - Foam	XBV1966	XBV1966	XBV07054
17	Screw - Self Tapping	XBMSR316C500	XB04112	XB06372
18	Cover - Upper Leg	XAV03824	XAV03824	XAV06611
19	Shim (as required)	XBH36	XB03816	XB01977
20	Bevel Pinion	XA03878	XAV05272	XAV06600
		11 Teeth	13 Teeth	14 Teeth
21	Pin - Groove 0.38" x 1.5" Long	XBGP38112E	XBGP38112E	XBGP38112E
22	Cap Screw - Hex Head	XBV4441	XBV4441	XBV4441
23	Locknut 0.3816	XB338	XB338	XB338
24	Cross Shaft (68.13" Long)	XAV1910	XAV1910	XAV1910
25	Roll Pin 0.38 x 1.5" Long	XB21S3751500	XB21S3751500	XACRPV06634
26	Gear - Step	XAV1928	XAV1928	XAV06603
27	Shaft - Idler	XAV1957	XAV1957	XAV07085
28	Gear - Step (Undrilled)	XAV19281	XAV19281	XAV06606
29	Gear - Idler	XAV1927	XAV1927	XAV00602
30	Roll Pin 0.218" x 1.25" Long	XB21S181250	XB21S181250	XB21S2181250
31	Pin 0.38" x 1.44" Long	XACRPV1917	XACRPV1917	-
	Pin 0.25" x 1.44" Long	-	-	XACRPV06633
32	Gear - Shifter	XAV1929	XAV1929	XAV06604
33	Bush - Shifter	-	-	XBLG065801
34	Spring - Shifter	XBV1949	XBV1949	-
35	Gasket - Gearbox	XBV1926	XBV1926	XBV06621
36	Locknut 0.25" 28	XB3103	XB3103	-
37	Screw - Hex Head	XBCX14F58	XBCX14F58	XB06372
38	Cover - Gearbox	XAV1920	XAV1920	XAV06617
39	Bush - Open	XBV851	XBV851	XBV06622
40	Bush - Closed	XBV851	XBV851	XBV07082
41	Shaft - Shifter	-	-	XAV06625A
42	Shaft - 2 Speed	-	XAV01522A	XAV06624A
43	Shaft - Single Speed	-	XAV05123A	-
44	Handle - Crank	XAV90/0	XAV90/0	XAV90/0
45	Spring - Shifter	-	-	XBSPG020/02
	Ball - Shifter	-	-	XBBAL0023/01