

BRAKE VALVES

R6 Relay Valve



Z279180

SUP: 3/8" NPT. DEL: 3/8" NPT.
CONT: 1/4" NPT.

R-6 style relay valve is primarily used on vehicles to apply and release rear axle(s) service or parking brakes.

RE6 Relay Emergency Valve



Z101197

SUP: 3/4 NPT. RES: 3/8" NPT.
DEL: (2) 1/4" NPT. (2) 3/8" NPT
EMERGENCY SER: 1/4" NPT

A dual function valve used on trailers. (1) A relay valve that applies and release the service brakes. (2) An emergency feature that automatically applies the service brakes in the event that the supply air is lost.

R8 Relay Valve



Z289395

SUP: 3/4" NPT
DEL: (2) 1/2" NPT (1) 1/4" NPT

R-8 relay valves incorporate an integral double check valve with a balance port connection which provides both an anti-compounding or quick exhaust feature.

R12 Relay Valve



Z102626 (ZRL3518JC02)

SUP: (1) 1/2" NPT. DEL: (4) 1/2" NPT
CON: (1) 1/4" NPT 4PSI

R12 Relay valve is used to rapidly apply and release rear axle(s) service and parking brakes. When signalled by the service brake valve, they graduate, hold or release air pressure from the chamber to which they are connected.

R12 Relay Valve

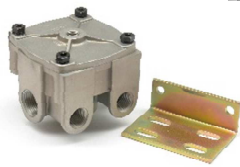


Z104561 (ZRL3518JC06)

SUP: (1) 1/2" NPT DEL: (4) 3/8" NPT
SER: (1) 1/4" NPT 5.5PSI

Crack Pressure 5.5 PSI Relay valves are primarily used on long wheelbase vehicles to apply and release rear axle(s) service or parking brakes.

R12H Relay Valve



Z103009 (Z103009RL)

SUP: (2) 3/4" NPT DEL: (2) 3/8" NPT
SER: (1) 1/4" NPT 4PSI

R12H relay valve is primarily used on vehicles to apply and release rear axle(s) service or parking brakes.

R14H Relay Valve



Z103010 (Z103010RL)

SUP: (2) 3/4" NPT DEL: (2) 1/2" NPT
SER: (1) 1/4" NPT 4PSI

The balance port provides an anti-compounding feature that prevents simultaneous application of the service and parking sides of the spring brake and allows the valve to control spring brakes and service brakes.

Pull Cord Drain Valve



ZRL3513ZA

1/4" NPT
Cable operated Manual Drain Release Valve. Cable Length 1600mm

D2 Governor Valve



ZR275491

Standard Version. Pressure setting range is adjustable. Governor - Signals the unloading mechanism on the compressor when to build up air to the reservoir and when to halt air build up. Usually between 100 and 120 psi.

Brake Load Sensing Valve



Z475/702/022/0

SUP: M22 x 1.5 DEL: M22 x 1.5
The Load Sensing Valve automatically controls the braking force in response to the amount of suspension spring deflection caused by the vehicle load.

Brake Load Sensing Valve



Z475/713/000/0

PORTS: M22 x 1.5
The Load Sensing Valve automatically controls the braking force in response to the amount of suspension spring deflection caused by the vehicle load.

Brake Load Sensing Valve



ZKY1956/5

SUP: 3/8NPT DEL: 1/4" NPT & 3/8" NPT
The Load Sensing Valve automatically controls the braking force in response to the amount of suspension spring deflection caused by the vehicle load.

BRAKE VALVES

Multi Circuit Protection Valve



Z9347141370

SUP 1: M22 x 1.5 DEL 21 – 24:
M16 x 1.5

The purpose of the Multi Circuit Valve is the retention of pressure in the intact circuits in case of failure of one or more circuits in a more-circuit air-braking system.

Multi Circuit Protection Valve



ZAE4428

SUP: M22 x 1.5 DEL: M16 x 1.5

The purpose of the Multi Circuit Valve is the retention of pressure in the intact circuits in case of failure of one or more circuits in a more-circuit air-braking system.

Multi Circuit Protection Valve



ZAE4603

SUP: M22 x 1.5 DEL: M16 x 1.5

The purpose of the Multi Circuit Valve is the retention of pressure in the intact circuits in case of failure of one or more circuits in a more-circuit air-braking system.

Multi Circuit Protection Valve



ZAE4605

SUP: M22 x 1.5 DEL: M16 x 1.5

The purpose of the Multi Circuit Valve is the retention of pressure in the intact circuits in case of failure of one or more circuits in a more-circuit air-braking system.

Multi Circuit Protection Valve



ZAE4613

SUP: M22 x 1.5 DEL: M16 x 1.5

The purpose of the Multi Circuit Valve is the retention of pressure in the intact circuits in case of failure of one or more circuits in a more-circuit air-braking system.

Trailer Ratio Relay Valve



Z9710021500

PORTS: M22 x 1.5

Max Operating Pressure 10 BAR
The purpose of the Trailer Ratio Relay Valve is to control the dual-line braking system.

SC-3 Single Check Valve



Z800372

INLET: 1/2" NPT. OUTLET: 1/2" NPT.
Permits air flow in one direction only. Used wherever pressure must be isolated and not allowed to flow back.

Single Check Valve



ZKN23000

INLET/OUTLET: 1/2"
Permits air flow in one direction only. Used wherever pressure must be isolated and not allowed to flow back.

DC-4 Double Check Valve



Z278614

PORT SIZE: 3/8"

The double check valve is used in the air brake system when a single function or component must be controlled by either of two valves. The double check valve permits either, but not both control valves to operate the device connected to its outlet port.

SR1 Trailer Spring Brake Valve



Z286364

SUP & DEL: 1/4" NPT. RES: 1/4" NPT
CON: 1/4" NPT
55PSI. reservoir trip pressure.

SR-1 style spring brake valve is used in dual air brake systems using spring brake actuators.

SR2 Trailer Spring Brake Valve



Z106835

SUP & SER RES 1/4" NPT DEL:
3/8" NPT
TRAILER SER: 1/4" NPT DEL: 1/4" NPT

SR-2 style spring brake valve controls the application and release of spring brakes during normal parking and emergency situations.

Does not have trailer service port for anti-compound

SR5 Trailer Spring Brake Valve



Z109539

RES: 3/4" NPT SERV/SPRING RES:
1/4" NPT
SER: 1/4" NPT TRAIL SUP: 1/4" NPT
TRAIL SER: 1/4" NPT
Anti-compounding

SR-5 style spring brake valve controls the application and release of spring brakes during normal parking and emergency situations.

BRAKE VALVES

ST3 Safety Valve



Z284142

1/4" NPT

Pressure Setting 150PSI

Safety valves are used in an air brake system to protect against excessive air pressure build up and to sound an audible alert. Used in conjunction with the Air Dryer.

ST4 Safety Valve



Z800350

1/4" NPT

Pressure Setting 150PSI

Safety valves are used in an air brake system to protect against excessive air pressure build up and to sound an audible alert. Used in conjunction with the Air Dryer.

ST4 Safety Valve



Z109914

1/2" NPT

Pressure Setting 250PSI

Specially designed for use in compressors, ST-4 safety valves are installed in an extra head discharge port, if available, or in the discharge line near the compressor, to prevent damage in the event of discharge line blockage.
For use on TU-FLO 550 & 750 Compressors.

Trailer Control Valve



ZKY2106/5

SUP: 3/8" NPT. DEL: 3/8" NPT.
AUX: 1/4" NPT.

Dual circuit valve with two separate supply and delivery circuits.

PR-2 Pressure Protection Valve



Z277148

SUP: 1/4" Del: 1/4"

Minimum Closing Pressure 85PSI
Permits air flow in one direction only. Used wherever pressure must be isolated and not allowed to flow back.

DC-4 Double Check Valve



Z283590

PORT SIZE: 3/8"

Accepts a signal from two sources and delivers it to a common outlet. Normally used with a trailer control and foot valve where delivery pressure from either source, but not both controls the brake.

TR-3 Inversion Valve



Z289288

SUP: 1/4" NPT. DEL: 1/4" NPT
CONT: 1/8" NPT 42-52 PSI

The TR-3 Inversion valve is an air operated control valve. Unlike other valves, it is normally open. It is closed by using air pressure from another source. These valves are primarily used in emergency or parking brake systems and operate with air from a reservoir isolated by a check valve.

SV-1 Synchro Valve



Z282472

SUP & SER RES 1/4" NPT
DEL: 3/8" NPT

TRAILER SER: 1/4" NPT DEL: 1/4" NPT
The Synchro valve is a pilot operated, non-graduating, pneumatic control valve. These valves are used to control air from a remote supply which is different than control air supply. They have definite opening and closing pressures and can be used to delay or sequence the action of other pneumatic devices

TP5 Tractor Protection Valve



Z288605

TP5 Tractor protection valves are commonly used to protect the tractor air brake system under trailer breakaway conditions.

QRN2 Quick Release Valve



Z800063

SUP: 1/2" NPT DEL: 3/8" NPT

The purpose of the quick release valve is to quickly release air from the service brake chambers when the foot brake is released, or in the case of spring brakes, to quickly release air when the secondary brake is applied.

E-6 Foot Treadle Valve



Z286689

Dual circuit valve with two separate supply and delivery circuits.

E8-P Foot Treadle Valve



Z800629

SUP: 3/8" NPT. DEL: 3/8" NPT. AUX: 1/4" NPT.

Dual circuit valve with two separate supply and delivery circuits.

BRAKE VALVES

PP1 Dash Valve



Z109411

SUP: 1/4" NPT. DEL: 1/4" NPT.
EXH: 1/4" NPT.
TRAILER EMERGENCY BRAKE CONTROL
A pressure sensitive on-off control valve usually used to control parking and emergency brakes

MV3 Dash Valve



Z106981

TRAILER DEL: 1/4" NPT
RES: (2) 1/4" NPT
EXH: 1/4" NPT TRACTOR DEL: 1/4" NPT
AUX: 1/4" NPT
PARKING BRAKE & TRAILER AIR SUPPLY

Z290655 Knob
Red Trailer Air Supply
Z248502 Knob
Yellow Parking Brake

Sealco Park Brake Valve



Z99600B

INLET 1/4" NPT OUTLET 1/4" NPT
EXT 1/8" NPT
SPRING BRAKE CONTROL
Commonly used as dash valve inside tractor or truck. Automatically shuts-off when inlet pressure drops below indicated psi.

Sealco Emergency Release Valve



Z17600B

INLET 1/4" NPT OUTLET 1/4" NPT
EXH 1/4" NPT
EMERGENCY BRAKE RELEASE
Commonly used as dash valve inside tractor or truck except 17600B which is used outside on dollies & trailers

Sealco Lever Control Valve



Z216050

INLET 1/8" NPT OUTLET 1/8" NPT
A versatile manually operated lever valve used in a wide variety of applications. Toggles side to side to open or close.

Sealco Quick Release Hold Valve



Z780210

INLET 3/8" NPT OUTLET 3/8" NPT
These valves will pass and retain supply pressure to the delivery port until the supply pressure drops to less than half that of the delivery. All valves have a 1/4" NPT threaded exhaust port.

Sealco Quick Release Valve



Z2000B (4-5 PSI) Z2000C (8-10 PSI)

These valves quickly ^{exhaust} delivery pressure when the supply line pressure to the inlet port drops. They are commonly used to release large air volumes from devices such as air suspension bags.

Sealco One-Way Check Valve



Z2200/4 (1/4") Z2200/8 (1/2")

Allows air to flow through the valve in only one direction from inlet to outlet. Commonly used ahead of and in between reservoirs and on Control Line (Booster) valves.

Sealco Two-Way Check Valve



Z320100

INLET 3/8" NPT OUTLET 3/8" NPT
Two way check valves select the highest pressure stream from the inlet ports and channel this to the outlet port or ports. Commonly used between air reservoirs which are merged together or between foot valve delivery ports to provide for trailer control.

Sealco Spring Brake Valve



Z110170 (ZRL3527GA)

SUP: 3/8" NPT CONT: 3/8" NPT RES A: 1/2" NPT
RES B: 1/2" NPT DEL: 3/8" NPT
These spring brake valves are designed for protected reservoir systems and feature service brake priority operation.

Sealco Pressure Protection Valve



Z1300/80

INLET: 1/4" NPT OUTLET: 1/4" NPT
80PSI
Adjustable pressure protection valve. Closes flow when inlet pressure drops below set pressure.

Sealco Tractor Protection Valve



Z7700

SUP IN: 1/4" NPT SUP OUT: 1/2" NPT
CONT IN: 1/4" NPT CONT OUT: 1/2" NPT
Prevents loss of tractor brakes in case of trailer breakaway or loss of air pressure. Automatically closes off lines and vents trailer side supply between 20 to 45 psi.

BRAKE VALVES

Sealco 2 Port Service Relay Valve LOV 2 Valve



Z110360 (LOV-2 1.5 PSI)

Z110410 (LOV-2 4.0 PSI)

CONT: 3/8"NPT RES: 1/2"NPT
DEL: 3/8"NPT

Non-ABS two port service relay valves in several configurations. Bracket mounted versions available for remote installation

Sealco 4 Port Service Relay Valve LOV 4 Valve



Z110380 (LOV-4 1.5PSI)

Z110415 (LOV-4 4.0PSI)

CONT: 3/8" RES: 3/4"NPT
DEL: 3/8"NPT

Non-ABS four port service relay valves in several configurations. Bracket versions available for remote mounting.

Sealco Lov 2 & 4 Valve Springs

Illustration
Not Available

Part #	Colour	PSI
Z4048	White	5.5
Z4040	Gold	4.5
Z4049	Blue	2.5
Z4033	Silver	1.5

MANUAL



Z110139

AUX: 3/8"NPT CONT: 3/8"NPT
RES:3/4"NPT
DEL: 3/8"NPT

Note #1: These valves include a [Ratio Feature](#). Do not use on converter dollies, lift axles or trailer turnable axles! The preferred application is one valve to control two axles.

Sealco Relay Emergency Valve



Z110470

SUP: 3/8"NPT CONT: 3/8" NPT
RES:3/8"NPT
DEL: 3/8" NPT 4.5 PSI

Relay emergency valves are used with single (service only) brake chambers. All valves on this page are charging style.

Sealco Line Filter



Z2550

INLET: 3/8NPT OUTLET: 3/8"NPT

Used to filter contaminants from the supply line before they reach the brake system.