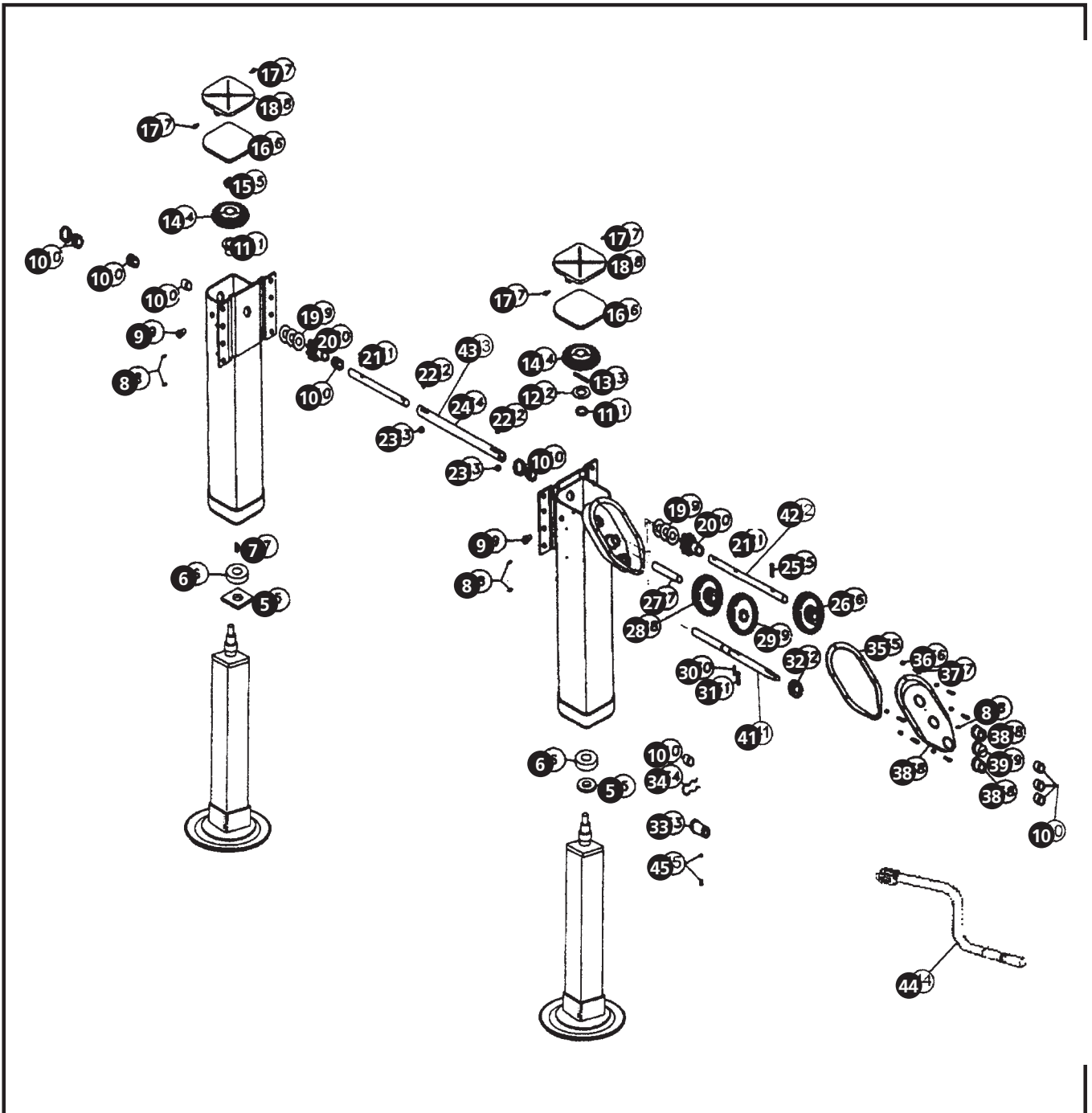




# LANDING LEGS

LG75 EX75/4 LGS4A/1A





# LANDING LEGS

## LG75 EX75/4 LGS4A/1A

ITEM	DESCRIPTION	Prior to February 1990 Model LG75	Between 02/90 to 05/94 Model EX75/4	After May 1994 Model LGS4A/1A
1	STANDARD STUD FOOT	XAV796B1	XAV796B1	XAV796B1
2	WEIGHT SAVER SKID FOOT	-	-	XAV796WS
3	HOLLOW AXLE	XAV19011	XAV19011	XAV19011
	SOLID AXLE	XAV19031	XAV19031	XAV19031
4	ROLL PIN 0.36" X 3.0" LONG	XB2153753000	XB2153753000	XB2153753000
5	THRUST WASHER	XAV1913	XAV1913	XAV06629
6	BEARING BALL STANDARD DUTY	XBV647	XBV647	XBV647
	BEARING BALL HEAVY DUTY	XBV6471	XBV6471	XBV6471
7	WOODRUFF KEY	XBH322	XBH322	-
8	LUBRICATION FITTING	XB767	XB767	XB767
9	LUBRICATION PLUG	XB01789	XB01789	XB01789
10	BUSHING	XBV851	XB0307	XBLG0559
	BUSHING RETAINER	-	-	XALG1570
11	PLASTIC BUSHING	XBV643A2	XBV643A2	XBV06630
12	HARDENED STEEL WASHER	-	-	XBV06632
13	HARDENED STEEL PIN	-	-	XACRPV06635
14	BEVEL GEAR	XAV1962	XAV042051	XAV06601
		22 TEETH	20 TEETH	24 TEETH
15	JAM NUT 1" 14	XBFW25	XBFW25	-
16	GASKET FOAM	XBV1966	XBV1966	XBV07054
17	SELF TAPPING SCREW	XBMSR316C500	XB04112	XB06372
18	UPPER LEG COVER	XAV03824	XAV03824	XAV06611
19	SHIMS (AS REQUIRED)	XBH36	XB03816	XB01977
20	BEVEL PINION	XA03878	XAV05272	XAV06600
		11 TEETH	13 TEETH	14 TEETH
21	GROOVE PIN 0.38" X 1.5" LONG	XBGP38112E	XBGP38112E	XBGP38112E
22	HEX HEAD CAP SCREW	XBV4441	XBV4441	XBV4441
23	LOCKNUT 0.3816	XB338	XB338	XB338
24	CROSS SHAFT (68.13" LONG)	XAV1910	XAV1910	XAV1910
25	ROLL PIN 0.38 X 1.5" LONG	XB2153751500	XB2153751500	XACRPV06634
26	STEP GEAR	XAV1928	XAV1928	XAV06603
27	IDLER SHAFT	XAV1957	XAV1957	XAV07085
28	STEP GEAR (UNDRILLED)	XAV19281	XAV19281	XAV06606
29	IDLER GEAR	XAV1927	XAV1927	XAV00602
30	ROLL PIN 0.218" X 1.25" LONG	XB215181250	XB2152181250	XB2152181250
31	PIN 0.38" X 1.44" LONG	XACRPV1917	XACRPV1917	-
	PIN 0.25" X 1.44" LONG	-	-	XACRPV06633
32	SHIFTER GEAR	XAV1929	XAV1929	XAV06604
33	SHIFTER BUSHING	-	-	XBLG065801
34	SHIFTER SPRING	XBV1949	XBV1949	-
35	GEARBOX GASKET	XBV1926	XBV1926	XBV06621
36	LOCKNUT 0.25" 28	XB3103	XB3103	-
37	HEX HEAD SCREW	XBCX14F58	XBCX14F58	XB06372
38	GEARBOX COVER	XAV1920	XAV1920	XAV06617
39	BUSHING OPEN	XBV851	XBV851	XBV06622
40	BUSHING CLOSED	XBV851	XBV851	XBV07082
41	SHIFTER SHAFT	-	-	XAV06625A
42	2 SPEED SHAFT	-	XAV01522A	XAV06624A
43	SINGLE SPEED SHAFT	-	XAV05123A	-
44	CRANK HANDLE	XAV90/0	XAV90/0	XAV90/0
45	SHIFTER SPRING	-	-	XBSPG020/02
	SHIFTER BALL	-	-	XBBAL0023/01



# HITCH PARTS

**Z-T809**



## DROP IN KING PIN



**Z-174N**

2 x 1/2" UNF C/S Screw and Nut for Drop In King Pin

## 50mm DROP OUT KING PIN



**Z-19/086**

5/8" UNF H/T Bolt for Drop Out King Pin

Flange & Pin Replacement use Georg Fischer Flange & King Pin Set

**Z-662101617** 8mm set

**Z-662101619** 10mm set

**Z-662101608** 12mm set

**Z-19/095**



# GEORG FISCHER +GF+

## 50mm EURO-HITCH KING PIN & SETS



**Z-662101609** 50mm  
**Z-662101169** 90mm



**Z-662101617** 8mm set  
**Z-662101619** 10mm set  
**Z-662101608** 12mm set



**Z-659112320**

Self Locking Bolt for Euro-Hitch King Pin